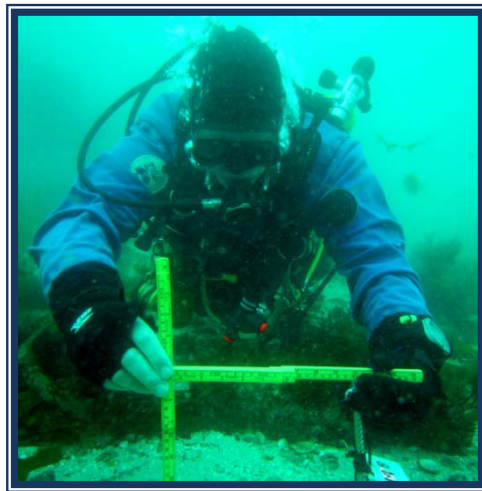


HMS COLOSSUS



SURVEY REPORT 2008

KEVIN CAMIDGE

Site Name	HMS Colossus
Licence	Survey
Date issued	18 th December 2007
Designation	2001/2403

Summary

Monitoring the condition of the wreck continued this year with four separate inspections undertaken. The sediment level monitoring which began in August 2003 was continued. The sediment levels on site fell throughout the year. It is clear that previously buried parts of the wreck are becoming exposed due to the diminution of the sediment levels. During the final inspection of the site a new section of copper-sheathed timber was discovered to the south of the main area of exposed wreckage.

A small area at the stern of the wreck was protected with a geotextile covering of Terram 4000. The efficacy of this type of protection on this site was established in the stabilisation trials commissioned by English Heritage (2003-2005). Timber sample blocks were installed beneath the Terram mat and on the seabed. A small seabed sign was also installed to inform visiting divers of the function of the Terram protection. Before the Terram was installed the area to be covered was recorded in detail, along with a control area so that the long term effects of the stabilisation could be determined. This work was commissioned by English Heritage, the recording was undertaken by the Cornwall and Isles of Scilly Maritime Archaeology Society (CISMAS). The project report for this work is attached.

Kevin Camidge
22.X.2008

Fieldwork Activities

There were four objectives this year:

- Monitor the deterioration of the exposed timber on the seabed.
- Record the sediment levels.
- Undertake detailed survey at the stern.
- Install Terram protection over a small area at the stern.

Diving was undertaken on four separate occasions

Date	Task	Number of dives	Diver hours
18-23 May 08	Survey	39	40.5
1-6 June 08	Terram install	15	16
18 July 08	Monitoring	2	2
17 Sept 08	Monitoring	2	2.5
TOTAL		58	61

Survey and Terram deployment

The detailed survey, deployment of the Terram mat and seabed sign are documented in the *Colossus Stabilisation & Recording 2008* report, which accompanies this document.

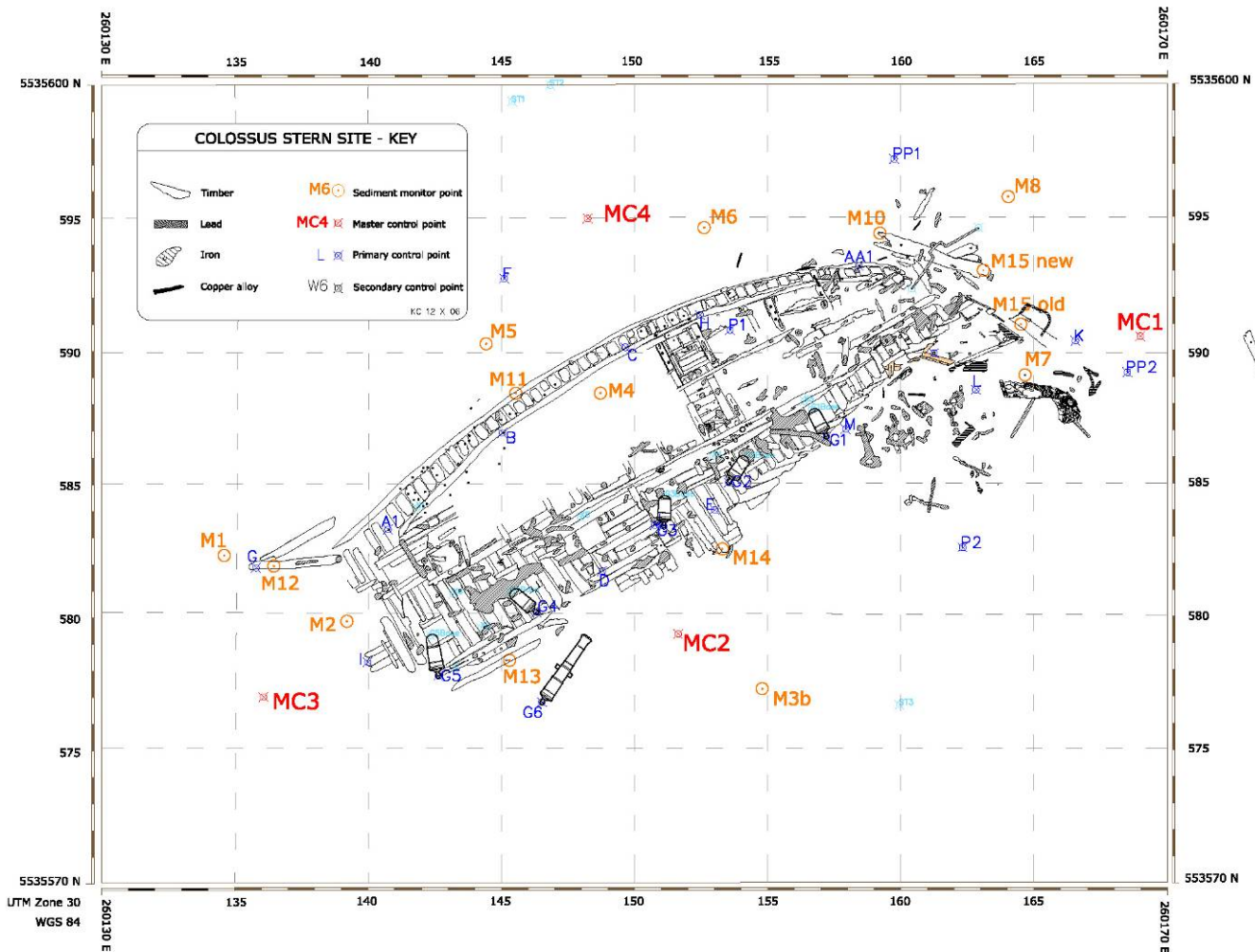
Additional Timber Exposed

The final dive of the season was during September this year. Routine sediment level measurements were recorded. While looking for sediment monitor point 3b, in very poor visibility and strong tide, a new section of wreckage was discovered, close to sediment monitor point 3b (see plan of sediment monitor points below). This consisted of newly exposed timber with copper sheathing (held in place with copper nails). This is likely to be part of the underwater section of the ship's hull. This will need to be investigated and recorded as a matter of some urgency at the start of the 2009 diving season.

Sediment level monitoring

The sediment level monitoring began in August 2003 as part of the Colossus site stabilisation trials commissioned by English Heritage (project # 3593). A copy of the full stabilisation report can be downloaded at www.cismas.org.uk.

Sediment level measurements were taken in May, July and September this year.

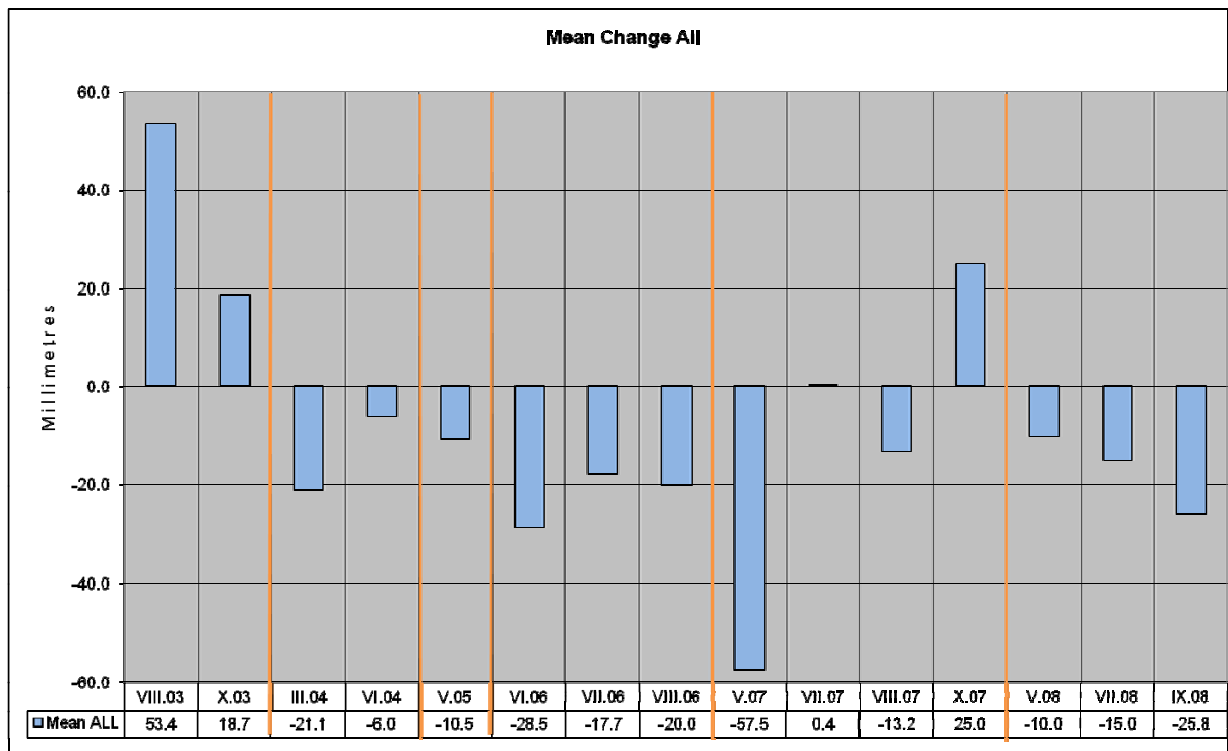


The sediment level measurements shown in green were taken this year; those in blue are last year's measurements. For the sake of completeness the measurements taken between 2003 and 2005 as part of the Colossus site stabilisation trials have also been included.

	18.VIII.03	21.10.03	30.3.04	28.VI.04	9.V.05	8.VI.06	11.VII.06	20.VIII.06	22.V.07	14.VII.07	22.VIII.07	18.X.07	21.V.08	17.VII.08	17.IX.08
M1	66	65			0	35	20	-20	-40	-40	-45	-10	-40	40	-70
M2	75	75	8	54	-20	30		-25		-35	-25	5	-50	-60	-65
M3	73	10	4	-10	0				-55		-35		0	-45	
M4	-22	-10	-74	-63	-100	-95	-85	-90	-125		-5	25	30	20	-5
M5		5	10	-2	-15	41	10	10	-45	-30	-20	10	0	-5	-25
M6	70	57			15					-20	25	40	0	0	-50
M7	63	20		25	30		50		30	30	-30		-40	-25	
M8	49	20	-10	10	40	30	20	25	-10	10	0		0	-10	30
Mean M1-M8	53.4	30.3	-12.4	2.3	-6.3	8.2	3.0	-20.0	-40.8	-14.2	-16.9	14.0	-12.5	-10.6	-40.8
M10		10	-15	-30	-35	-100				20	-5	55	40	-30	25
M11		12	-21	-13	-9	-14				10	0	15	40	30	5
M12		-31	-61	-54	-39	-124	-109			20	0	50	-40	-40	-55
M13		5	-38	24	-21					10	-25	30	-30	-20	-20
M14		9	-18	-18	-28	-123				30	15	40	-10	-15	-20
M15		15	-17	5	35	35	-30			0	-35	15	-40	-50	0
Mean M10-M15		3.3	-28.3	-14.3	-16.2	-65.2	-69.5			15.0	-8.3	34.2	-6.7	-20.8	-10.8
Mean ALL	53.4	19.5	-20.4	-5.4	-10.2	-25.2	-15.1	-20.0	-40.8	-0.7	-13.5	24.1	-10.0	-15.0	-25.8

Table of sediment level changes relative to May 2003 for M1 to M8; August 2003 for M10 to M15. Values shown are in millimetres; positive values denote a rise in seabed level (relative to 2003) while negative values denote a fall in seabed levels (relative to 2003).

A blank entry in the table indicates that the diver was unable to locate the monitor point. Often the points are very difficult to find due to the large amount of weed which covers the site over much of the summer period.



Bar chart showing the mean overall change in seabed sediment level (relative to the level in 2003) for all monitor points. Zero represents the seabed level in 2003; negative values denote a mean fall in sediment levels, positive values a mean rise in sediment levels

It is clear from the chart above that the sediment levels on the site have fallen consistently this year. The overall mean fall in sediment levels was 25.8mm. The effect of this fall in sediment levels has been exposure of previously buried timber and the loss of some timber from the site. For illustrations of these see figs 7, 8 and 13 in the *Colossus Stabilisation and Recording 2008* report which accompanies this document.

Kevin Camidge